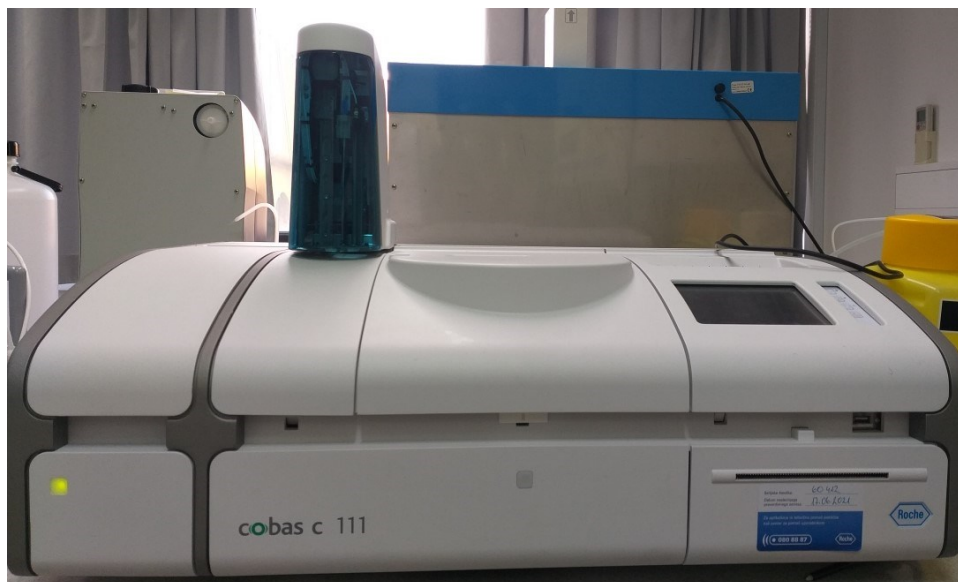


Obrazec za popis raziskovalne opreme/ Research equipment inventory form

naziv opreme/ name of equipment	Analizator Cobass c 111 z ISE/ Analyzer Cobass c 111 z ISE) (Roche Diagnostics)
letnik izdelave / year of manufacture	
tehnični opis opreme in uporaba pri raziskavah/ technical description of equipment and use in research	Biokemijski analizator Cobass c 111 omogoča meritve biokemijskih parametrov in elektrolitov v bioloških vzorcih z zmogljivostjo od 10 do 50 vzorcev na dan. / The cobas c 111 analyzer enables the measurement of biochemical parameters and electrolytes in biological samples in laboratories running 10 to 50 samples per day.
Pri katerem projektu je oprema bila ali se trenutno uporablja/ In which project was the equipment used or is currently in use	Uporablja se pri izvedbah kliničnih študij za analizo vzorcev krvi preiskovancev in projektih, ki vključujejo meritve biokemijskih parametrov /Equipment is used in clinical studies for analysis of blood samples from participants and projects that include measurements of biochemical parameters
Lokacija opreme / Location of equipment	Celični laboratorij, FVZ /Cell laboratory, Faculty of Health Sciences
Kdo opremo uporabljanja (raziskovalec ali oddelek)/	Aparaturo uporabljajo raziskovalci Katedre za prehransko svetovanje – dietetiko in Katedre za aplikativno kineziologijo/ Equipment is used by researchers of the Department for Nutritional Counseling – Dietetics and Department for Applicative Kinesiology

**Who of using
equipment
(researcher or
department)**

**Fotografije
opreme/
equipment
photos**



**Kontaktna
oseba za
opremo/
Contact
person for
the
equipment**

Ana Petelin

**Dodatne
opombe/
Additional
notes**